

HDIS
Health Department Information System
Helping You...Help Others

**Archive
User Manual**



The Baldwin Group, Inc.

7550 Lucerne Drive, Middleburg Heights, OH 44130

Suite 306

support@baldwingroup.com

Cleveland, OH 44130

(440) 891-9100

FAX (440) 891-9458

Copyright © 1996 - 2022

The Baldwin Group, Inc.

ALL RIGHTS RESERVED

HDIS are trademarks of The Baldwin Group, Inc.

No part of this publication may be stored in a retrieval system, transmitted, or reproduced in any way, including but not limited to photocopy, photograph, magnetic, or other record, without the prior agreement and written permission of The Baldwin Group, Inc.

Windows® and MS-DOS® are registered trademarks of Microsoft Corporation.

Other trademarks are owned by their respective companies.

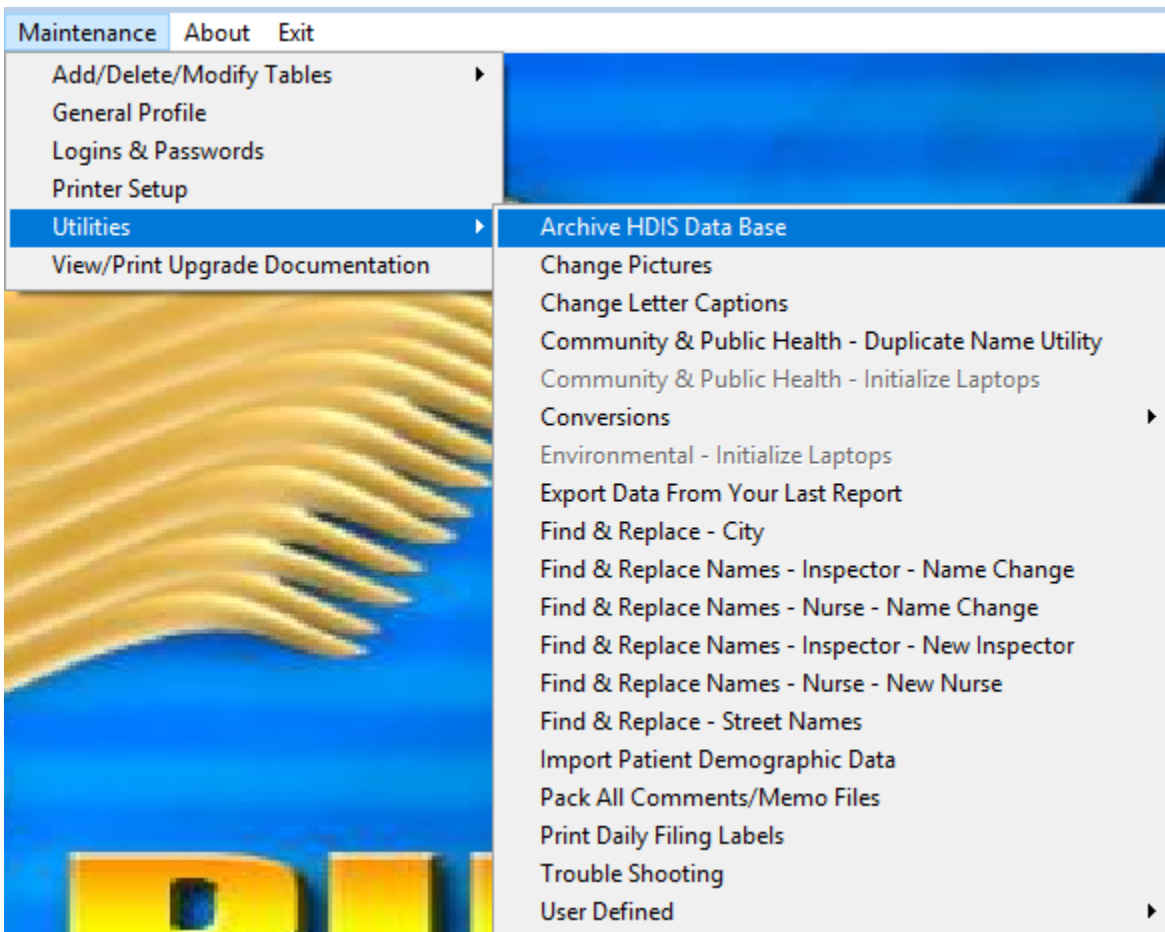
Disclaimer

All data examples containing personal names, company names (or companies), vehicle information, or locations that appear in this guide are fictitious in nature and do not refer to, or portray, in name or substance, any actual names, organizations, entities, or institutions. Any resemblance to any real person (living or dead), organization, entity, or institution is purely coincidental.

How to Archive

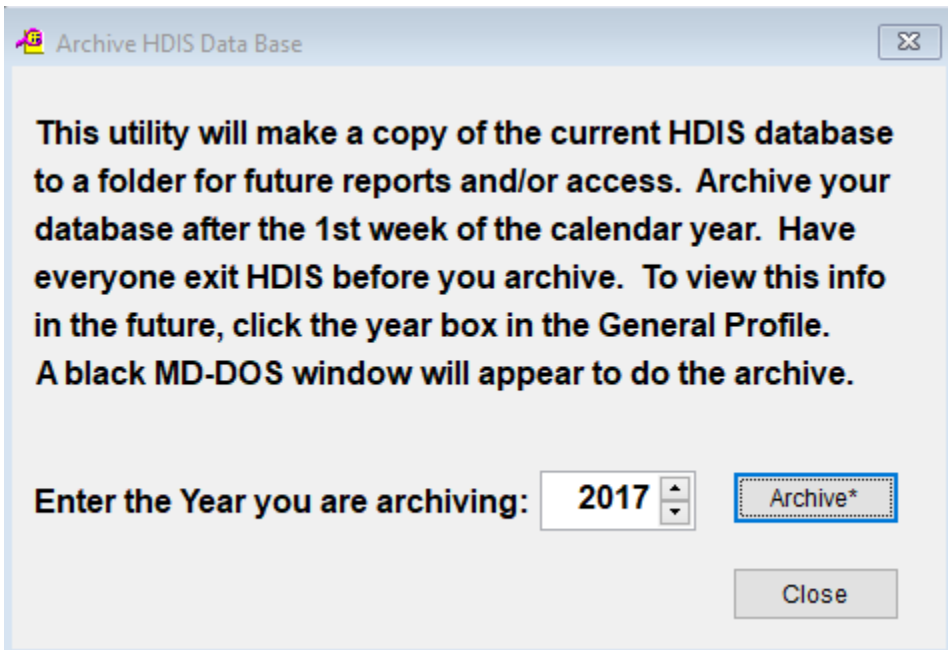
From the main menu in HDIS, navigate to:

HDIS > Maintenance > Utilities > Archive HDIS Data Base



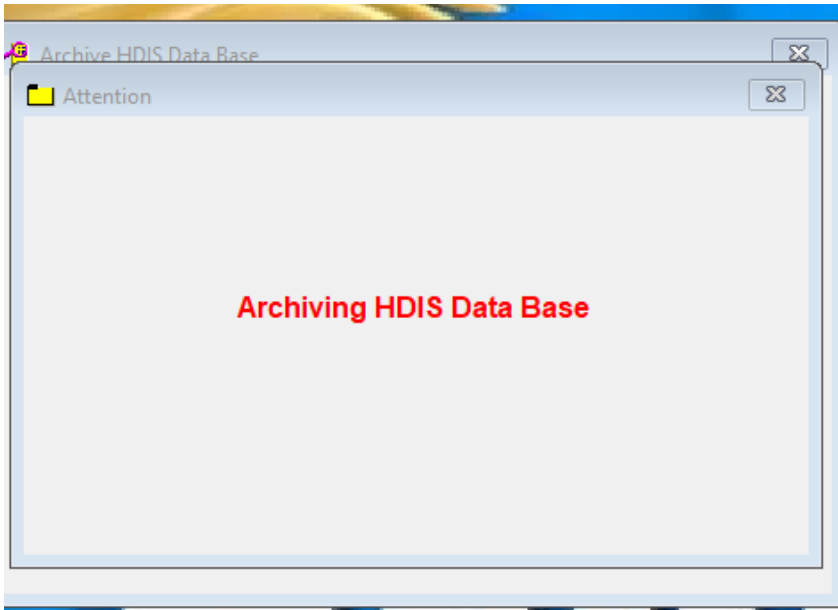
After you click on “**Archive HDIS Data Base**” a window should pop up:

Reminder: Please perform this function when no one is using HDIS.

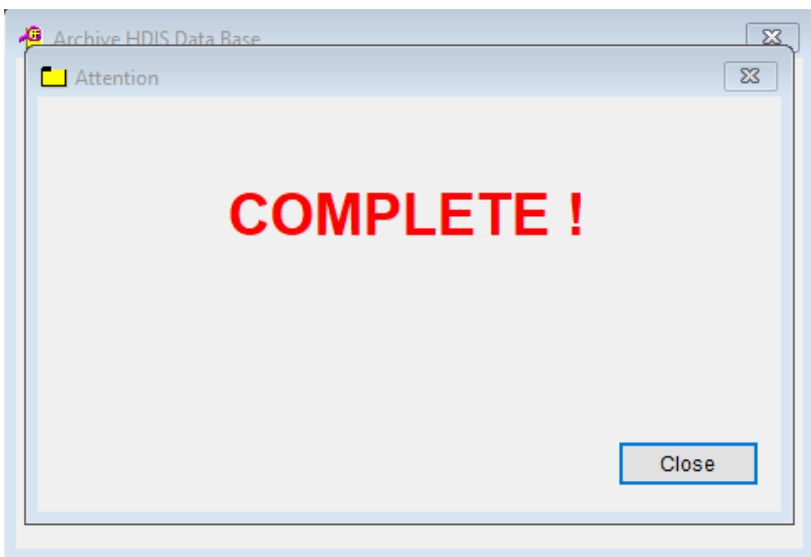


Enter the year you would like to archive and RIGHT – click the “**Archive***” button.

A new window should pop up that tells you it is Archiving HDIS Data Base:



After it has finished another window should pop up:

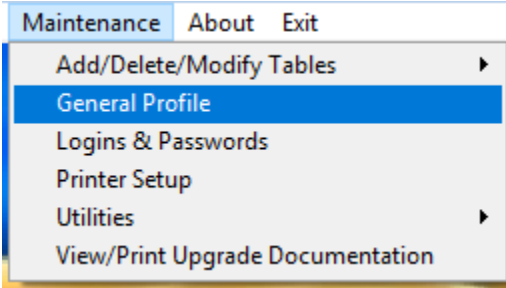


Hit the "Close" button to close out.

How to Use an Archive

From the main menu in HDIS, navigate to:

HDIS > Maintenance > General Profile



The "General Profile" should pop up:

 A screenshot of the 'General Profile' window in HDIS. The window has a title bar and a close button. It contains several tabs: 'Demographics', 'General', 'Management', 'Environmental', 'Community & Public Health Services', and 'Vital'. The 'Demographics' tab is active. The form contains the following fields:

- * Health Department: BGI HD
- City: Middleburg Heights
- Division: (empty)
- * State: OH
- * Address1: 7550 Lucerne Drive
- * Zip: 44130
- Address2: (empty)
- * County: generic
- * Phone #'s: 1-440-891-9100
- * FAX #: 1-440-891-9458
- Federal Tax ID: ADFA
- Commissioner: Doc Darrell
- Client/Server Location: M:\HDIS\DATA
- Email: ADFASD
- Make Checks Payable to: ADSF
- View Archives: A grid of checkboxes for years from 2017 to 1998.

 At the bottom, there are sections for 'System Settings' and 'Workstation Settings'.

- System Settings: Workstation Monitor Active Update Frequency 60 seconds
- Workstation Settings: Station ID 51CAAE9B-CA36-49CF-8092-FADC821D4648, Station Description Workstation Description, Workstation Monitor Active Update Frequency 60 seconds

 A legend indicates '* - Required Fields'. There are 'Cancel' and 'Close' buttons at the bottom right.

At the bottom of this window you should see “**View Archives**”

View Archives

2019 2018 2017 2016 2015 2014 2013 2012 2011 2010
 2009 2008 2007 2006 2005 2004 2003 2002 2001 2000
 1999 1998

Click on the year of the archive you would like to view.

If it does not allow you to click on a year that is grayed out, then that means there is not an archive for it.

Click the “**Close**” button to close out.

You should now be able to see the data related to the year you have chosen.