

HDIS

Health Department Information System

Helping You...Help Others

HDIS

Workstation Install



The Baldwin Group, Inc.

7550 Lucerne Drive

Suite 306

Cleveland, OH 44130

(440) 891-9100

FAX (440) 891-9458

Copyright © 1996 - 2021

The Baldwin Group, Inc.

ALL RIGHTS RESERVED

HDIS are trademarks of The Baldwin Group, Inc.

No part of this publication may be stored in a retrieval system, transmitted, or reproduced in any way, including but not limited to photocopy, photograph, magnetic, or other record, without the prior agreement and written permission of The Baldwin Group, Inc.

Windows® and MS-DOS® are registered trademarks of Microsoft Corporation.

Other trademarks are owned by their respective companies.

Disclaimer

All data examples containing personal names, company names (or companies), vehicle information, or locations that appear in this guide are fictitious in nature and do not refer to, or portray, in name or substance, any actual names, organizations, entities, or institutions. Any resemblance to any real person (living or dead), organization, entity, or institution is purely coincidental.

Table of Contents

Download HDIS Workstation Installer Application 1

Administrator Permissions..... 1

Run the HDIS Workstation Installation application..... 2

 HDIS Root Folder Specification 3

 Installation of VFP OLE DB Application 7

Installation of the HDIS Workstation 9

Installation of Remote HDIS 12

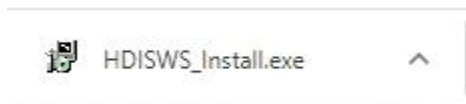
HDI Path Edit Utility 12

Download HDIS Workstation Installer Application

To obtain the current version of the HDIS Workstation Installer Application, open a web browser and in the address bar, type in the following:

```
baldwingroup.com/HDIS/HDISWS_Install.exe
```

This will result in a copy of the current version of the installer application to be downloaded to the Download folder on the workstation. The downloaded file will be displayed in a download status bar shown at the bottom of the screen, similar to the following:



Upon successfully downloading the application, move the downloaded file to the Exe folder located under the HDIS (root) directory on the network:

```
<drive:/unc>\HDIS\Exe
```

Administrator Permissions

As part of the system policies implemented for the health department, the user's ability to use / run software might be disabled and unable to perform the necessary steps to complete installation.

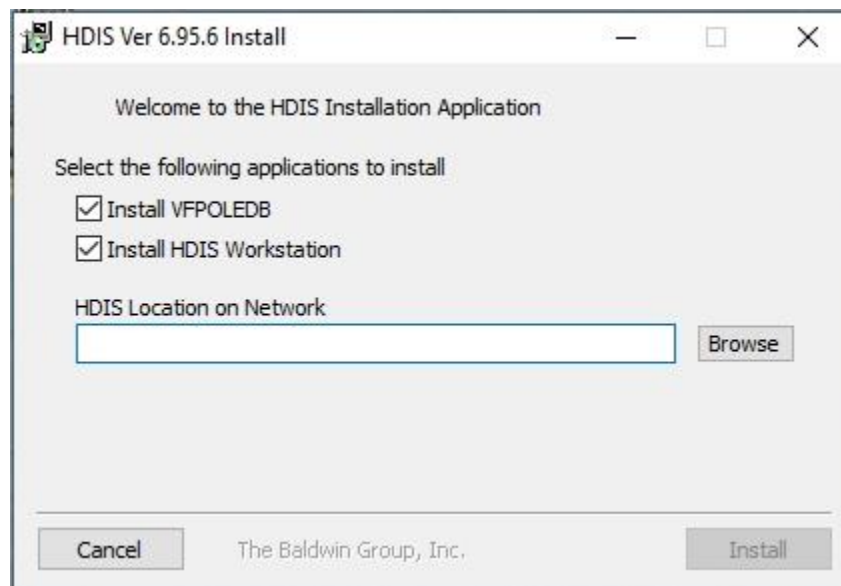
If that is the case, then you will need to be logged into the workstation with administrator rights when running the HDIS Workstation Installation process.

Run the HDIS Workstation Installation application

Upon successful download of the current HDIS Workstation Installation application, we are ready to perform the installation.

Navigate to the Hdis\Exe folder which the workstation installation app has been saved to and run the application.

When the application is launched, it will check to verify whether or not each application has already been installed. If it is determined that an application has not been installed previously, such application will be displayed as selected. The following display shows that both the VFP OLE DB application and the HDIS Workstation need to be installed on the current workstation.



At least one of the applications must be selected for the installation to proceed.

If you attempt to uncheck an application, a message stating that installation of the application must be done and the selection will be checked.

HDIS Root Folder Specification

The installation app needs to know where to find the source installation files for the application(s) to be installed. This is specified in the text box labeled 'HDIS Location on Network'

The location to be entered is the (root) folder where all HDIS related material resides. Folders such as Data, Yearly Archives, Exe, Reports, etc. are located beneath the HDIS root folder.

You can go to the Maintenance -> General Profile screen of HDIS and find the server specification on the General Tab labeled 'Client/Server Location'. The location of the HDIS root folder is the value specified excluding the '\data' at the end.

For example, if the value specified is "H:\Hdis\Data", the HDIS root folder is "H:\Hdis".

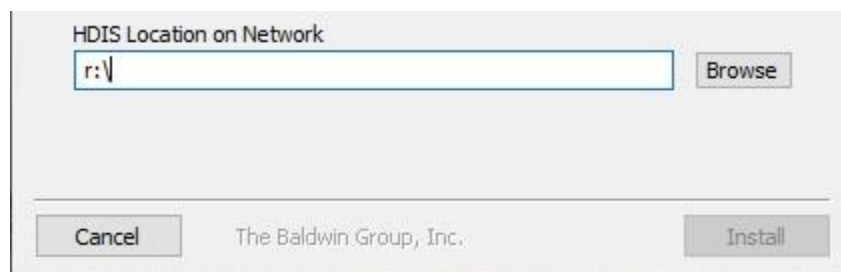
You can specify the HDIS Location on the Network in one of the following manners:

- Enter the drive/path to the HDIS folder on the network.
- Enter the UNC and path to the HDIS folder on the network.
- Browse the network for the HDIS folder on the network.
Depending on the security related policies that have been applied to the system, the browse function may not be able to see the drives and/or servers on the system.

Manual Entry of Root Folder Specification

Per manual entry of the drive/path or UNC specification, the system will (re)evaluate whether or not HDIS resides in the updated location specified.

In this example, the installer was unable to find HDIS in the R:\ folder because HDIS resides in the R:\Hdis folder on the network. As a result, the Install button is not enabled for proceeding with the installation.



Upon completion of typing in the path for the HDIS root folder, the install butt will be activated for selection to begin the installation on the workstation.

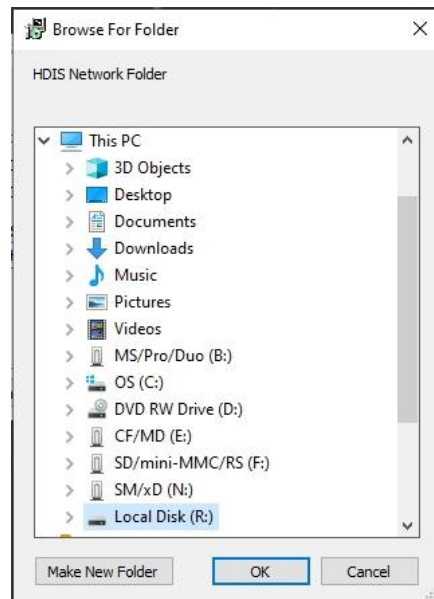


- As the first two characters of the drive/path and UNC specification begin with '<drive>:' and '\\', respectively, the evaluation will not begin until the third character is typed.

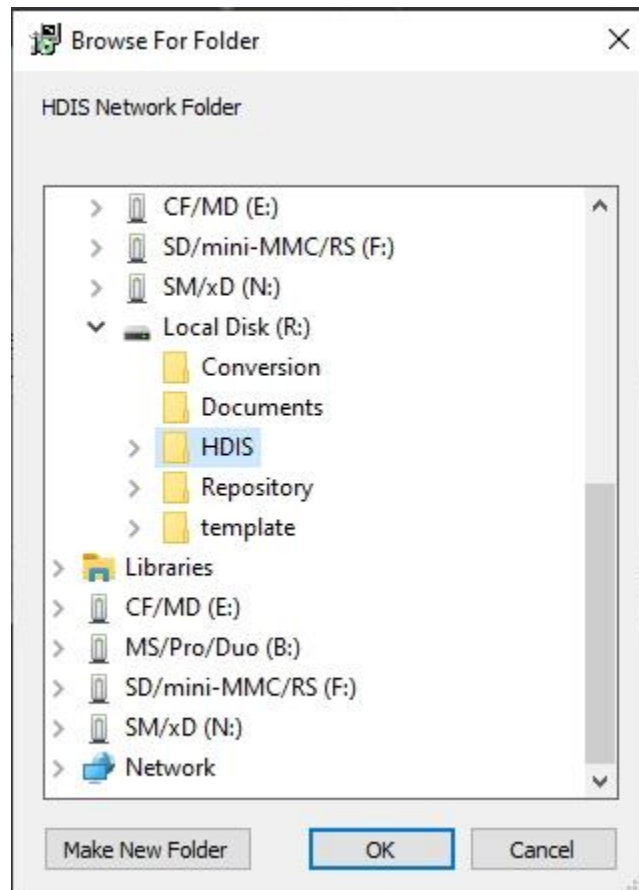
Browse for the Root Folder Specification

Another option for specifying the HDIS root folder is to navigate to the folder by clicking 'Browse' at the end of the textbox.

Upon clicking the Browse button, the browse window will be displayed for navigating to the HDIS root folder, as shown below.



You can navigate to the HDIS root folder by clicking the mouse on the '>' buttons displayed next to the appropriate entry displayed in the list. The HDIS folder is selected only when the folder name is highlighted, as shown here.



- When there is already a root folder specification at the time the Browse button is selected, the browse window will be displayed with the current root folder specification currently selected.

Upon completing the navigation and clicking the HDIS root folder, click the OK button and the path to the selected folder for HDIS will be displayed in the text box.

If the Cancel button is clicked during the browse, the value in the text box (if any) will not be updated, retaining the current value.

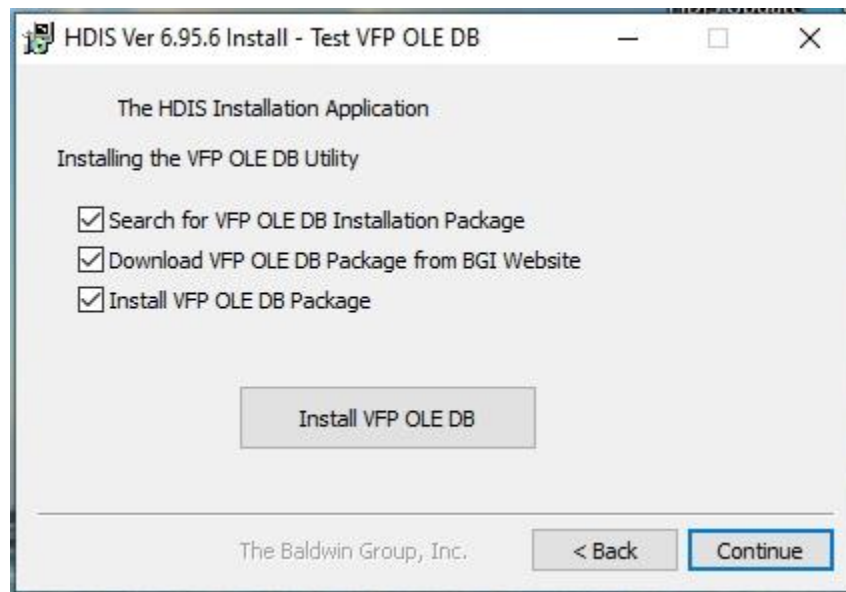
Proceed with Installation

Upon completing specifying the location for the HDIS root folder, the 'Install' button in the lower right corner will be enabled for selection to proceed with the installation.

The process for installing each application is discussed on the following pages.

Installation of VFP OLE DB Application

When the VFP OLE DB application is to be installed, the installation page for that application will be displayed, as shown here:



The installation process will begin when the 'Install VFP OLE DB' button is clicked.

As the installation proceeds, you will see the checkboxes cleared upon completion of each step. Additionally, a status description of the step being performed will display between the last checkbox and the Install button. The picture on the next page shows that the search and download processes have been completed and the installation is in progress.

NOTE: As mentioned previously, depending on the system policies implemented for the health department, per disabling the user's ability to use / run software, you will need to be logged into the workstation with Administrator access rights.



Installation in Progress

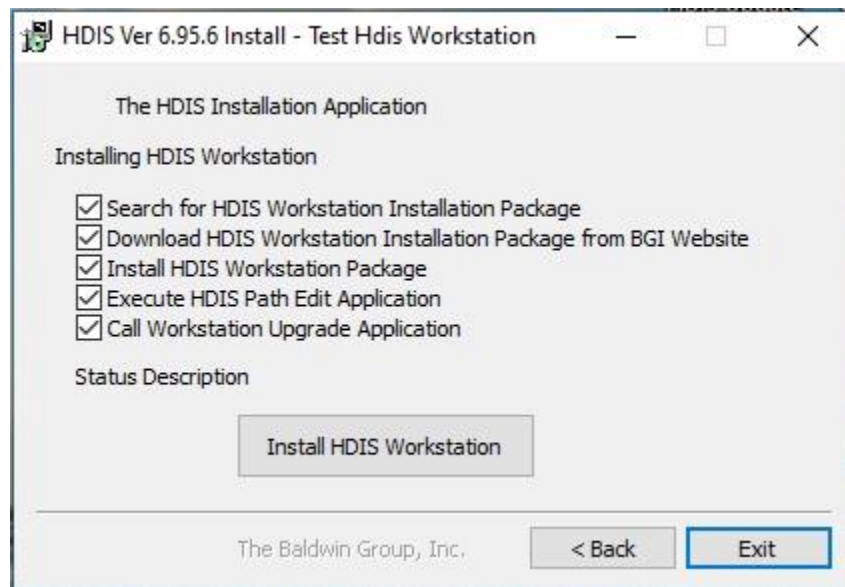
If an error preventing installation of the application is encountered, a message will be displayed to the user and a description of the error encountered will display in the status description.

When the installation of the VFP OLE DB application is completed, or you wish to skip installation of the application, click the button labeled 'Continue' or 'Exit'.

When button is labeled 'Continue', the application will proceed to the display for installing HDIS on the workstation, discussed on the following pages.

Installation of the HDIS Workstation

When the HDIS application is to be installed, the installation page for the HDIS application will be displayed, as shown below:



The installation process will begin when the ‘Install HDIS Workstation’ button is clicked.

As the installation proceeds, you will see the checkboxes cleared upon completion of each step. Additionally, a description of the task currently being performed will be displayed in the Status Description.

If a fatal error preventing installation of the application is encountered, a message will be displayed to the user and a description of the error encountered will display in the status description.

The HDIS Workstation process encompasses the following tasks:

1. Download the workstation installation file, when necessary, from the Baldwin Group, Inc. web site and execute the installation file.
 - When the workstation installation file does not exist or is dated more than six months ago, the installation file will be downloaded automatically, to insure the current installation application is used for the installation.
 - When the workstation installation file does exist, the date of the file will be checked. If this date is more than 30 days old, the user will be prompted as to refresh the installation file from the BGI web server.
 - If the date of the installation file is less than 30 days old, the installation will proceed with the current installation file.

The installation process will be launched automatically.

2. Download and execute the utility for editing the HDIS Server specification for the workstation.

The HDIS Path Edit application will be displayed as shown in the next page:

3. Execute the HDIS Workstation upgrade application to download, from the network, the current version of HDIS in use by the health department.

This is the same workstation upgrade application run on the workstation after an upgrade has been applied to HDIS on the network.

When the HDIS workstation upgrade is completed, we are ready to use HDIS on the workstation by clicking the HDIS shortcut created on the desktop of the computer.

4. Create the shortcut definition in the computer desktop and a folder entry in the Start menu with items for launching HDIS Workstation and the workstation upgrade defined.

Set HDIS Path

HDIS Program Path - Connected Version

HDIS Network Path - Connected Version

HDIS Network Path - Remote Version

Details displayed include:

Program Path	Location where HDIS is installed on the workstation in step 1
Network Path	Location where HDIS data resides on the server.

The Program path will be assigned to the folder which HDIS was installed on the workstation.

The Network Path can be entered in either of the following manners:

- Manually type in the network path specification and click the 'Set Path Exactly as Entered' button.
- Click the 'Convert to UNC and Set' button. The application will obtain the UNC specification from the system.

Additional functions of the HDIS Path Edit utility are discussed starting on page [12](#).

Installation of Remote HDIS

The process for creating the Remote HDIS installation on the workstation can be found in the HdisPathEdit application, discussed below. This process is executed by clicking the button labeled **Create Remote**.

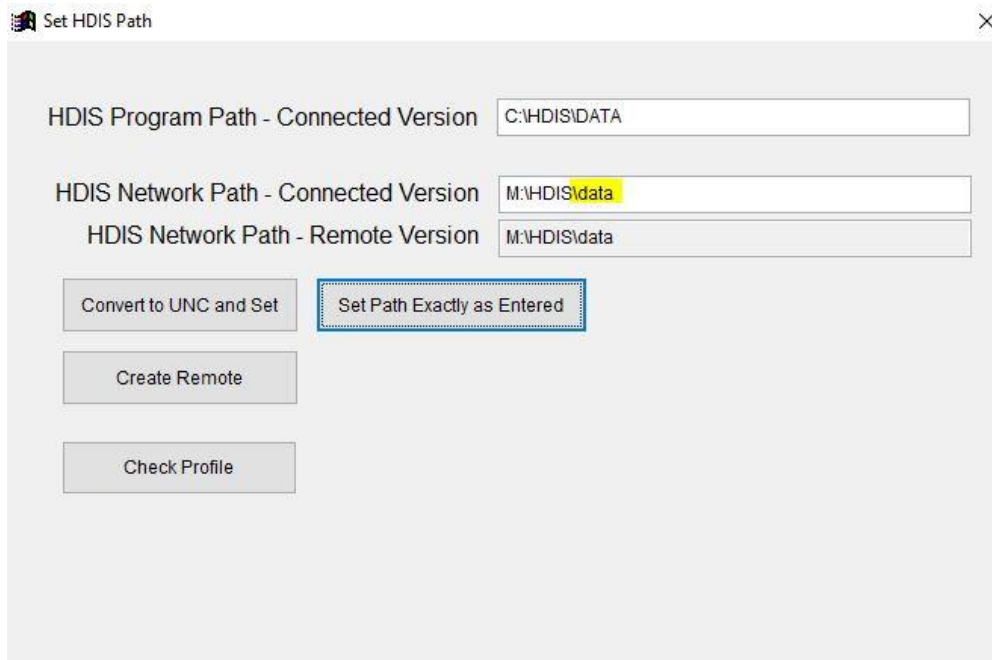
Upon clicking the **Create Remote** button, the files required for HDIS to function are copied from the existing workstation install of HDIS to the folder created for the Remote HDIS installation. Additionally, specifications for where to find the data files are updated in the Remote HDIS configuration details.

The regular workstation install and setup of HDIS must already be completed prior to performing the process to Create Remote HDIS.

HDI Path Edit Utility

The HDIS Path Edit utility is an application to review the details of the data file used for the functionality of HDIS. These are the details displayed in the General Profile screen of the Maintenance menus.

Upon launching the HDIS Path Edit Utility application, the current value for the data details will be displayed, as shown on the next page.



To access the HDIS Path Edit utility program directly, open file explorer and navigate to the **HDIS\exe** folder on the **network** (M:\HDIS\EXE, per using M: drive mapping to access HDIS).

HDIS Path Edit can run directly from the network in situations with path errors where the workstation already has HDIS installed.

The HDIS Path Edit utility provides the ability to do the following :

1. Edit the server specification of where to find HDIS on the main server
2. Create an installation of Remote HDIS on the workstation
3. Verify the Profile details table contains all current details, and if not update as necessary.

Editing the Server Specification

The Network Path can be entered in either of the following manners:

- Manually type in the network path specification and click the ‘Set Path Exactly as Entered’ button.

The path entered **must** include the **Data** sub-folder located beneath the HDIS root folder on the network.

Upon entering the network path, the application will check that the path entered is functionally valid by checking for the existence of certain files in the folder entered. If said file(s) are not found, a message is displayed and the path entered is reverted back to the previous value.

Upon successful entry / validation of the network path specification, click the **Set Path Exactly as Entered** to save the network path to disk.

- Click the ‘Convert to UNC and Set’ button. The application will obtain the UNC specification from the system and save it to disk.

Create Remote HDIS Installation

With the HDIS Path Edit Utility, the creation of an installation of Remote HDIS is as simple as clicking a button.

Upon launching the HDIS Path Edit Utility, simply click the **Create Remote** button displayed on screen.

Verify Profile Details

There may be times that an error is encountered in HDIS due to fields not existing in the Profile table. These errors will typically be encountered when entering HDIS or when entering particular screen(s) for a module.

The View Profile Details function checks the Profile table, removing any settings deemed no longer used and adding any missing details that are required for one or more modules of HDIS.