

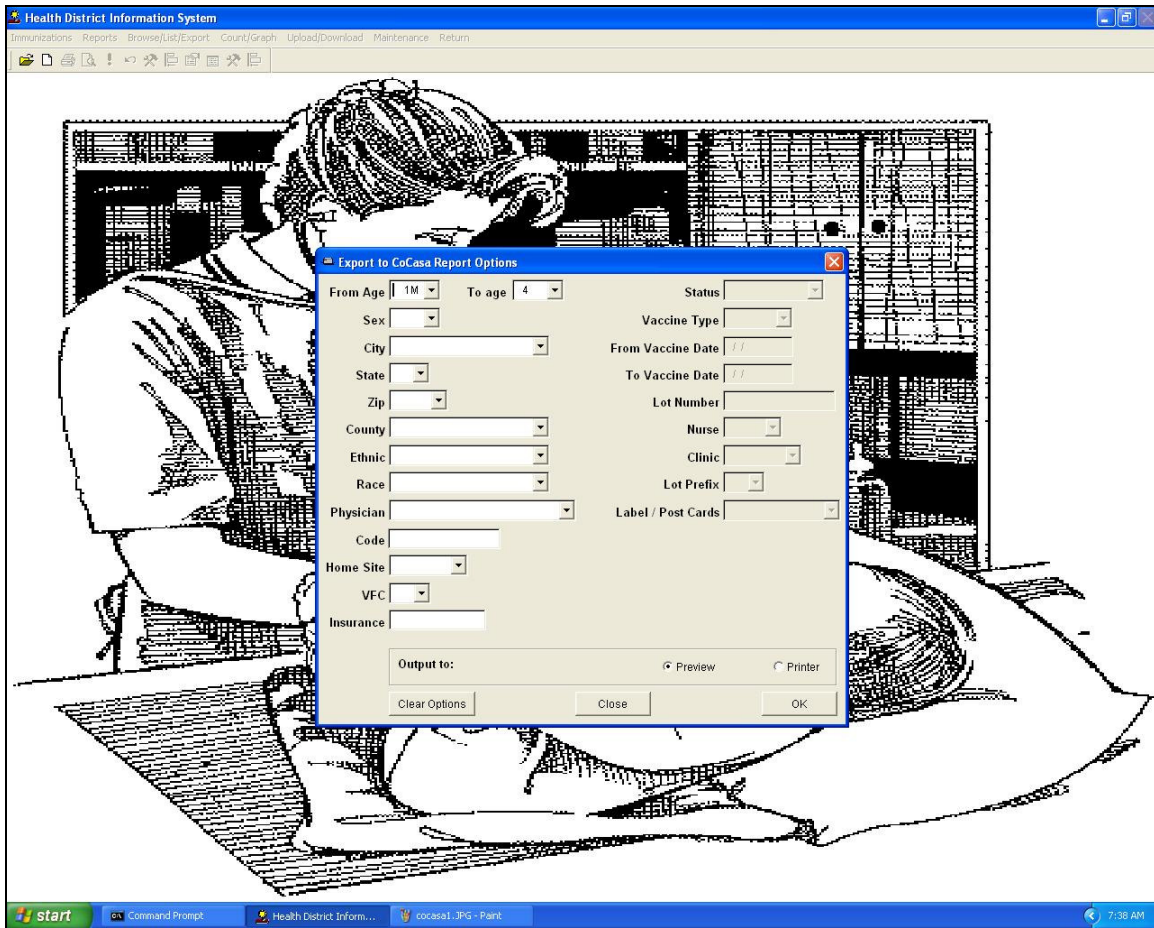
HDIS Export to CoCASA

STEP 1

- Click Childhood Immunizations
- Click Reports
- Click Export to CoCasa



Adjust "From Age" and "To Age" if desired.
Click OK (this will create an export text file for CoCasa).



When Finished, Exit HDIS and start CoCasa.

STEP 3

Importing HDIS Export File

Click File

Click Import

Click Using template

The screenshot shows the CoCASA software interface. The title bar reads "CoCASA - Welcome Joseph Napaver". The menu bar includes "File", "Assessment Tools", "Library", "Utilities", and "Help". The main menu is divided into tabs: "Provider Setup", "Assessment Setup", "Data Entry", "VFC-AFIX Evaluation", and "Reports". The "Import" option under the "File" menu is expanded, showing "Using template" as the selected option. Other options in the "Import" menu include "CoCASA data", "Legacy data", "Template", and "VFC-AFIX Setup". A sub-menu for "Legacy data" is also visible, containing a "Clinic" option. Below the menu, there are buttons for "Add", "Delete", "Copy", "Cancel", "Notes", and "Search". The main form area contains the following fields:

Provider site name	Sample Clinic		
Contact name first	John	Last	Doe
Street address 1	123 Any Street		
Street address 2			
City	Any City	State	Georgia
Zip	30329	<- Required	
Office phone	(555)123-4567	County	
Fax	(555)765-4321	Region	
VFC number	123abc	<- Required	
EMail address			
Provider type	Public health department operated clinic		<- Required
Specify			

Screen 1.1
Department of Health and Human Services
Centers for Disease Control and Prevention

Click HDIS Childhood Immunizations

Import Using Template

Choose a Template: CA-CAIR vac List Format
California - RIDE System
Georgia - GRITS
HDIS Childhood Immunizations
KIPHS PHClinic
Missouri - MOURAIC

Template name: HDIS Childhood Immunizations

Delimited Text File **Fixed Width Text File**

Start Import at Row: 1

Semicolon **Comma**
 Tab **Other** |

Select fields to import

- + Demographic
- + Patient Status
- + Risk Factor
- + DiagScreen Test
- + Counseling Event
- + Other Risk Factor

Fields in import file

- Field Name
- Last Name
- First Name
- Middle Initial
- Date of Birth (MANDATORY)
- Gender

Age Range

From: To: **Months** **Years** As Of: 12/01/2006

File Name:

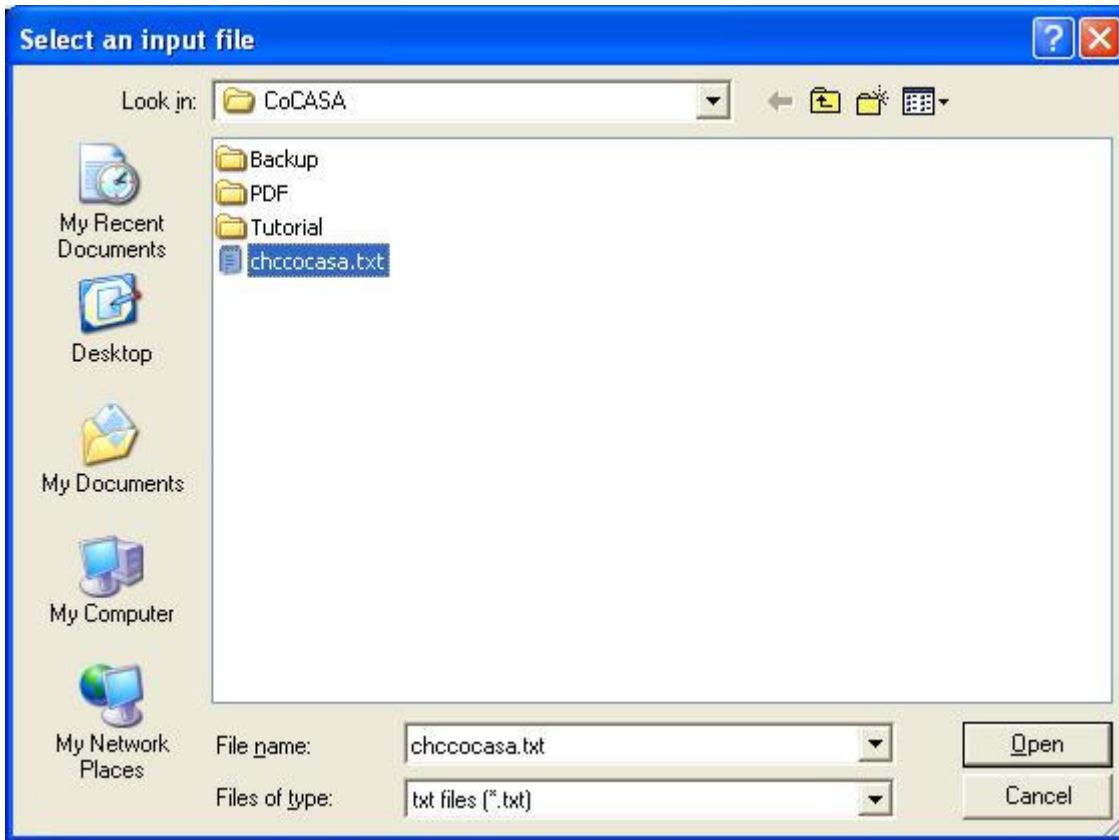
Provider: Sample Clinic (123abc)

Assessment:

Screen 6.5

Click Browse button

Click "chccocasa.txt"
Click Open button



Once the file is open, adjust the "Age Range", if desired.

Select a Provider

Enter the name of "Assessment"

Example: Health Department 20060405

Click Import button

Your imported assessment database is ready to run reports.